

## About the Austik Ticket Program

This program is now over ten years old and is offered at no charge without support or warranty of any kind.

The program is designed to print Jewelry tags to standard dot matrix printers from a DOS environment only.

The program supports only two models of Austik Jewelry labels...

Compu-10 Jewelry Dumbbell Tags

Compu-22 Jewelry Stringtags

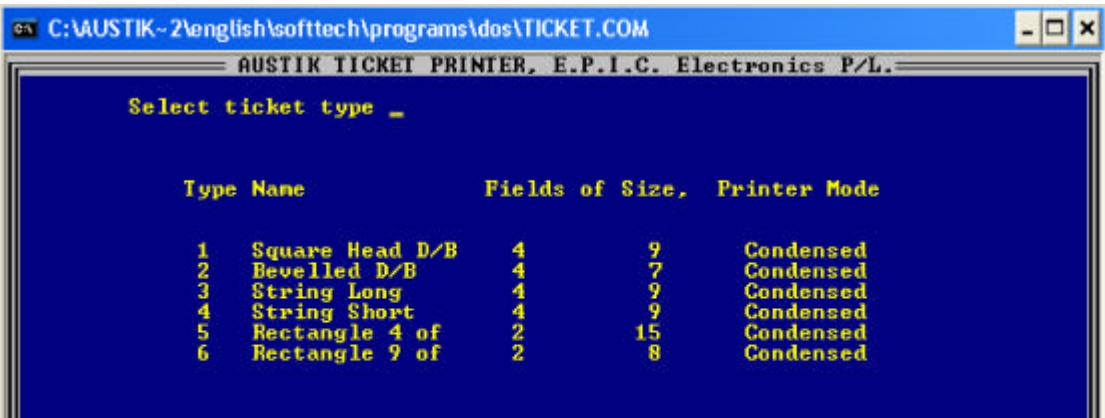
This program does not store information. You enter information, print the required quantity and then enter the next item. You cannot recall previously printed information. If you require the capability to store information you need to purchase a more advanced program.

 **Austik ticket.com is a very simple and limited DOS ticket program.**

## Using the Ticket Program

**1** You should have already installed and started the Ticket program. For more details see tech sheet ALS-T1-P-S-1-1-JUL2002.

**2**



Enter the number of the label you want to print. Note that only numbers 1 (Compu-10 code labels) and 4 (compu-22 code labels) will work correctly. Other models have been discontinued. Press Enter

Type	Name	Fields of Size	Printer Mode
1	Square Head D/B	4 9	Condensed
2	Bevelled D/B	4 7	Condensed
3	String Long	4 9	Condensed
4	String Short	4 9	Condensed
5	Rectangle 4 of	2 15	Condensed
6	Rectangle 9 of	2 8	Condensed

Austik Label Systems provides this publication "as is" and without warranty of any kind, either express or implied. The information included in this publication may include technical or typographical inaccuracies. Changes may be made to future editions in order to continue to improve the standard of information supplied. Changes made to products or procedures may render certain information out of date. If you are concerned that the information you are reading may be out of date or may have changed over time, please request a new publication at any time.

Copyright© Austik Label Systems 2002

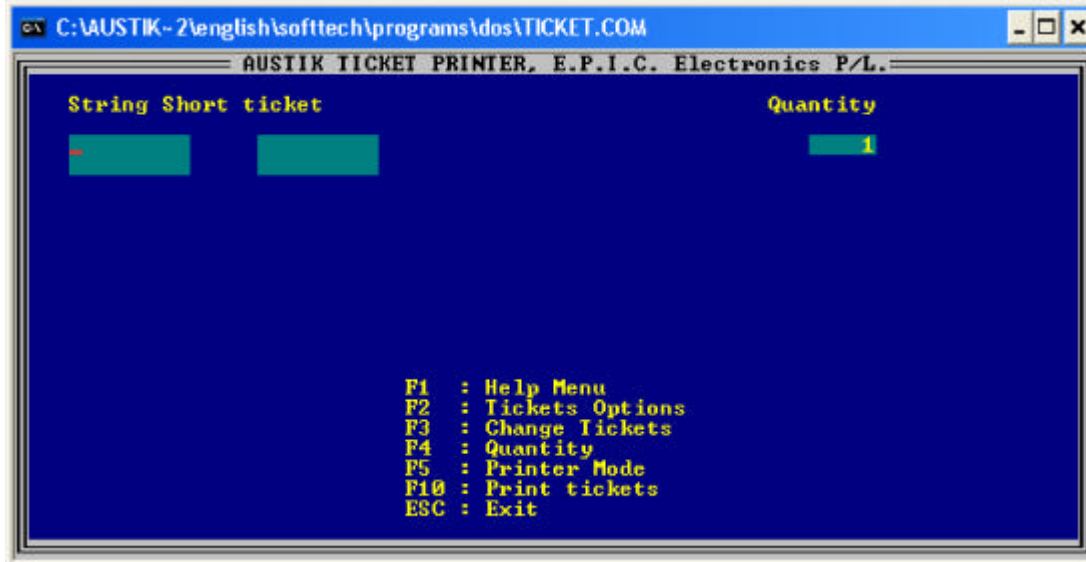


Austik Label Systems  
email: support@austik.com  
web: http://www.austik.com

Asia Pacific: tel: 61-3-97204722 fax: 61-3-97203082  
North America: tel 1-860-2869444 fax: 1-860-3712395

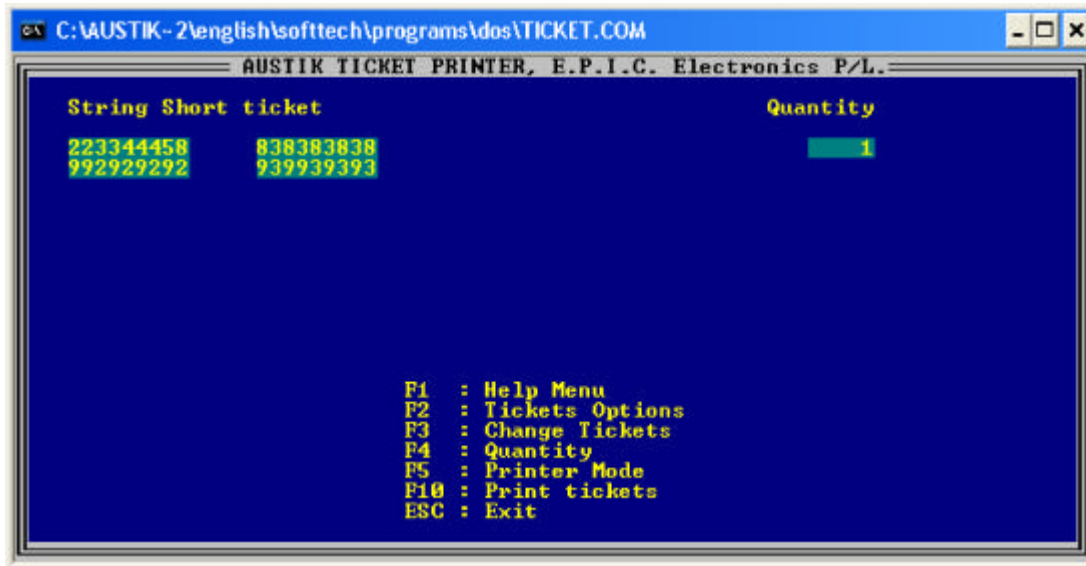
## Page 1 cont...

3



This screen allows you to enter label information and print quantities.

4



Type text in the first box and press ENTER. Type text in the second box and press ENTER and so on...

When all your text is entered.. Press F10 Enter the quantity required and then Press F10

PAGE 2

Austik Label Systems provides this publication "as is" and without warranty of any kind, either express or implied. The information included in this publication may include technical or typographical inaccuracies. Changes may be made to future editions in order to continue to improve the standard of information supplied. Changes made to products or procedures may render certain information out of date. If you are concerned that the information you are reading may be out of date or may have changed over time, please request a new publication at any time. Copyright© Austik Label Systems 2002



Austik Label Systems  
email: [support@austik.com](mailto:support@austik.com)  
web: <http://www.austik.com>

Asia Pacific: tel: 61-3-97204722 fax: 61-3-97203082  
North America: tel 1-860-2869444 fax: 1-860-3712395